



Portal > News > General > World Statistics Day

World Statistics Day

2019-10-21 - Hayley - in General

Yesterday was World Statistics Day and if you know us, you know we love a statistic, or two. Statistics help us to understand data and view it in a way that can be easily understood, helping to emphasise the scale of a problem, as well as appreciate improvements made. To recognise World Statistics Day, we've pulled together a few statistics that may be of interest.

According to Land Registry data[\[1\]](#), house prices have grown by 213% in the last 20 years. In January 1999, the average house price was £72,903 and in January 2019, the average house price was £228,475. That's an increase of £155,572!

Houses prices have soared and sadly, homelessness has too, and by quite a lot in recent times. According to the Ministry of Housing, Communities, and Local Government, homeless households in England are up 11.2% from 29,430 in quarter four 2018 to 32,740 in quarter one, 2019[\[2\]](#).

Whilst the number of homeless households is increasing, the birth rate in England and Wales is decreasing. It's down 3.2% on 2017 and nearly 10% on 2012! [\[3\]](#)

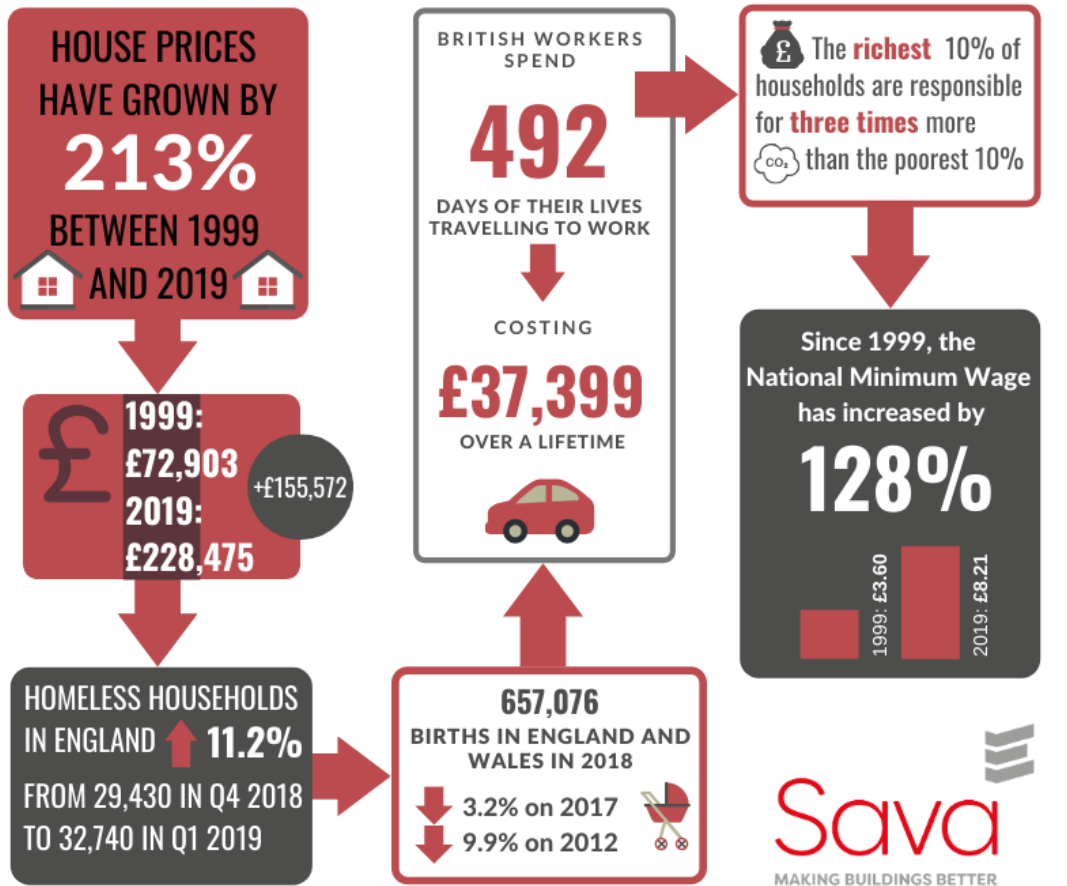
Did you know that British workers spend 492 days of their lives travelling to work and back, costing £37,399 over a lifetime?[\[4\]](#)

Can you just imagine the emissions from all that driving? Interestingly, the Centre for Sustainable Energy have found that on average, the richest 10% of households emit three times as much carbon than the poorest 10%.[\[5\]](#)

Since the national minimum wage was introduced in 1999 (starting out at £3.60 for workers 22 and over), by 2019, it has increased by £4.61 to £8.21. That's a 128% increase! The National Minimum Wage has grown faster than prices, average wages and GDP per head.

According to data from the Low Pay Commission[6], if it had risen in line with average weekly earnings, it would only have reached £6.54.

WORLD STATISTICS DAY



[1]

<http://landregistry.data.gov.uk/app/ukhpi/browse?from=1999-01-01&location=http%3A%2F%2Flandregistry.data.gov.uk%2Fid%2Fregion%2FUnited-kingdom&to=2019-01-01>

[2]

https://assets.publishing.service.gov.uk/government/uploads/system/uploads/attachment_data/file/831246/Statutory_Homelessness_Statistical_Release_Jan_to_March_2019.pdf

[3]

<https://www.ons.gov.uk/peoplepopulationandcommunity/birthsdeathsandmarriages/livebirths/bulletins/birthsummarytablesenglandandwales/2018>

[4]

<https://www.lloydsbankinggroup.com/Media/Press-Releases/2019-press-releases/lloyds-bank/british-workers-spend-492-days-of-their-lives-travelling-into-work/>

[5] <https://www.cse.org.uk/projects/view/1206>

[6]

https://assets.publishing.service.gov.uk/government/uploads/system/uploads/attachment_data/file/790910/20_years_of_the_National_Minimum_Wage_-_a_history_of_the_UK_minimum_wage_and_its_effects.pdf